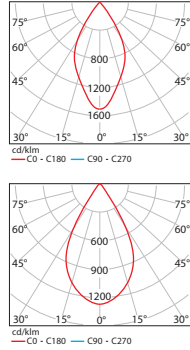
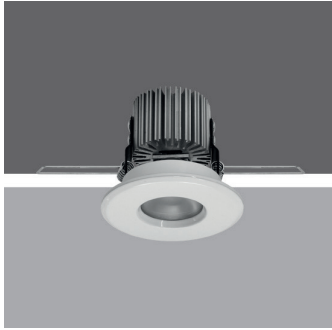
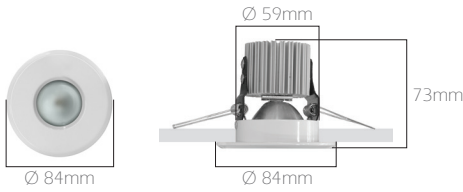


L1671

IP20 - IP54



Code	L1671/5	L1671/8
LED	High Efficiency Multi-Power, COB LED	
System Power	5.5 W	8 W
Light Flux	481 lm	660 lm
Colour Temperature	3000 - 4000 - 5000 K	
Voltage	220V - 50Hz	
Body	Aluminum injection	
Reflector	99% pure aluminum	
Cooler	Aluminum extrusion	
Glass	3mm thick, transparent, tempered	
Box Dimensions	30x44x15 cm (6pcs)	
Weight	2.300 gr (6pcs)	
Cut-Out	Ø 68 mm	



L1672

IP20



L1672/S



L1672/AS

Code	L1672/S	L1672/AS
LED	Led Lamp	
System Power	5.5 W	
Light Flux	350 lm	
Colour Temperature	4000 K	
Voltage	220V - 50Hz	
Body	0,80 mm sheet steel	
Colour	White	
Box Dimensions	13,5x12x13,5 cm	
Weight	0,35 kg	
Cut-Out	Ø 86 mm	

