

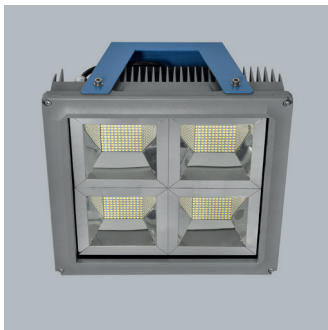


Industrial Lighting

TEKNOMAX

IP66

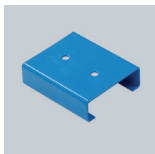
TEKNOMAX luminaires are designed for operating without any problems in industrial locations where luminaire bodies are exposed to harsh environment conditions. The luminous efficiency of the luminaires has been reached to extremely high levels. The luminaire efficiency comes from combining the optic design with the newest generation LEDs in the most appropriate way. Narrow and wide angle types of luminaires can be produced according to ceiling heights. Luminaires can be installed in any way using busbar, cable tanks and free hangers.



Brackets



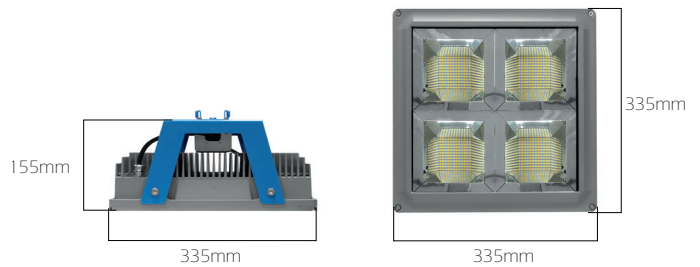
HCL-YT/AB  
Busbar



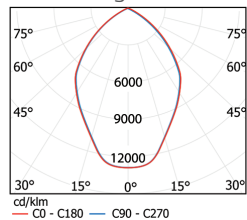
HCL-YT/AK  
Cable Tray



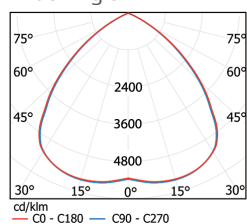
HCL-YT/AG  
Free bracket



Narrow Angle



Wide Angle



	Narrow Angle		Wide Angle
Code	HCL-YT 56/D HCL-YT 62/D HCL-YT 76/D HCL-YT 79/D	HCL-YT 83/D HCL-YT 88/D HCL-YT 98/D HCL-YT132/D	HCL-YT 83/G HCL-YT 88/G HCL-YT132/G
LED	High efficiency Mid-Power LED		
System Power	56W 62W 76W 79W	83W 88W 98W 132W	83W 88W 132W
Light Flux	9.289lm 10.362lm 12.693lm 12.974lm	13.376lm 14.030lm 15.632lm 20.643lm	13.556lm 14.085lm 20.770lm
Colour Temperature	3000 - 4000 - 5000 K		
Voltage	220V - 50Hz		
Body	Aluminum injection		
Diffuser	Impact Resistance tempered glass with serigraphy printed		
Colour	Grey		
Weight	13.000 gr		