

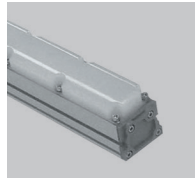
Wallwasher

LITPA QUANTUM - Slim

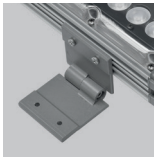
IP66



QTM/S

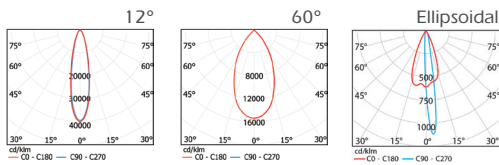
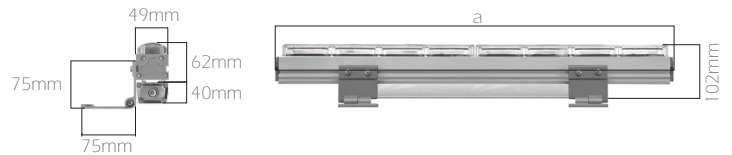


Opal Diffuser



Adjustable Mounting Bracket

Slim Series Litpa Quantum luminaires on the facade with subtle and elegant structures it provides optimum adaptation to the architectural structure by preserving itself. Foot structure can be adjusted at the desired angle. In this way, they can be assembled. Luminaires to be used with DMX systems suitable. Facade with color transitions using single and multiple colors or the desired effects can be provided in the environment.



Code	a
QTM/S 30	320 mm
QTM/S 60	620 mm
QTM/S 90	920 mm
QTM/S 120	1.220 mm

Code	QTM/S30	QTM/S60	QTM/S90	QTM/S120
LED Type	High efficiency Power LED			
LED Quantity	12pcs	24pcs	36pcs	48pcs
System Power	14W	28W	40W	51W
Light Flux	1800lm	3600lm	5400lm	7180lm
LED Life	50.000hrs			
Body	Aluminum extrusion			
Cooler	Cooling from the body surface			
Diffuser	Polycarbonate			
Optic	High efficiency lens			
Lens Angle	12° - 60° and Ellipsoidal			
Colour Temperature	3000K - 4000K - 5000K, red, blue, green, amber			
Accessory	Waterproof connector			

Luminous flux measured at 4000K with 60° lens