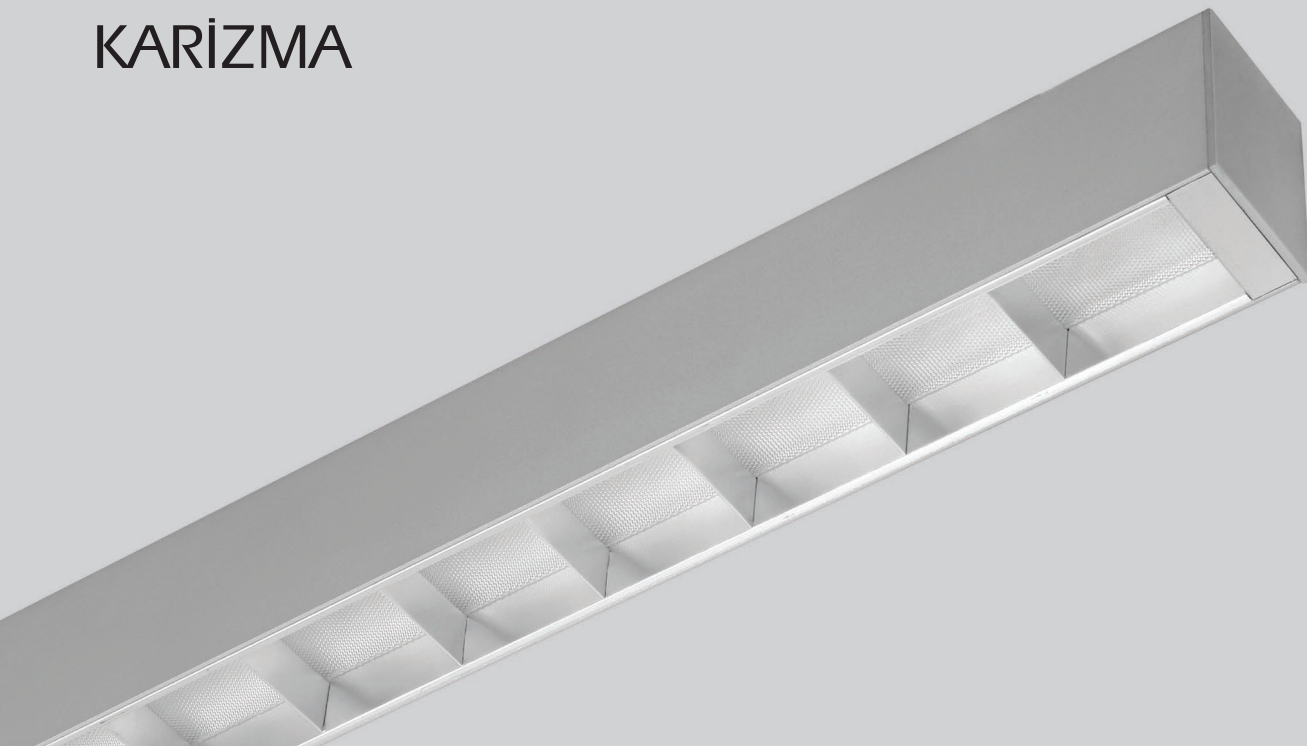
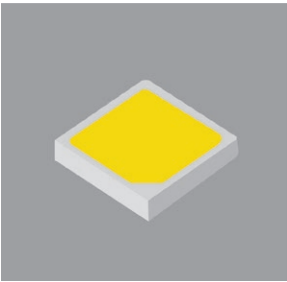


# KARİZMA



KARİZMA luminaries, which can be used as surface-mounted or pendant, are produced with the widths of 60 - 80 mm. They can be used as a single profile with the length of up to about 1,5 m in linear applications. Thanks to special mounting apparatuses, pendant length can easily be adjusted.

## LED



### High Efficient 3030 Mid-Power LED Specifications:

- Different colour temperatures ( 4.000 K - 5.000 K - 6.500 K )
- High colour rendering ( 80 - 90 % )
- @85°C LM 80-08 test report
- $\geq 50.000$ hrs economical life as IESNA TM-21
- ENERGY STAR® lumen maintenance requirements
- 3-step MacAdam ellipse

## DRIVER



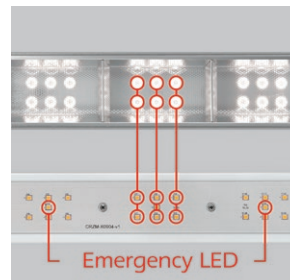
- Suitable for emergency lighting
- Power Factor  $\cos \phi$  0,9/0,95
- Total harmonic distortion (THD) < 10
- Efficiency > 85%
- Ripple < 10%
- Class I
- Switching cycle value > 50.000
- 100.000 h lifetime  $t_c = @65^\circ\text{C}$  &  $t_c \text{ max} = 75^\circ\text{C}$
- LED driver has short circuit, open circuit, over load, over heating protection
- 1-10V DALI compatible (optional)

## REFLECTOR



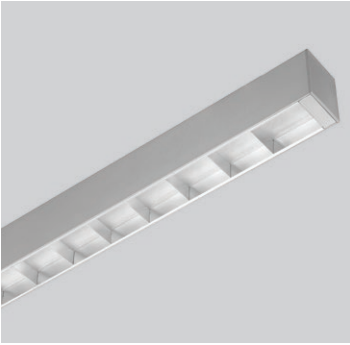
Characteristic of being able for reflector to be attached to luminaries reduces glare and it makes it possible to be used on desks in offices thanks to this. (CAT1 - CAT2)

## PCB

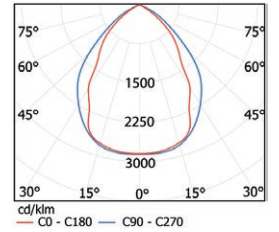


The LED's arrangement is made according to the reflector structure to prevent light loss. Also, only one LED in the middle can be tripped depending on the safety kit when the power is cut off.

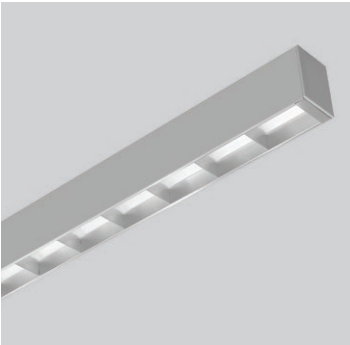
## DFR 80/C



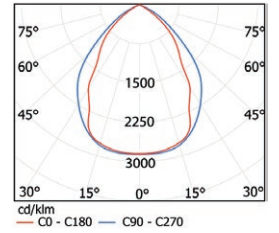
Body : Extruded aluminum painted with 80 micron electrostatic powder paint.  
 Diffuser : Prismatic Lens  
 Reflector : Double parabolic high pure aluminum  
 LED : High efficient Mid-Power Led  
 Protection : IP20



## DFR 60/C



Body : Extruded aluminum painted with 80 micron electrostatic powder paint.  
 Diffuser : Prismatic Lens  
 Reflector : Double parabolic high pure aluminum  
 LED : High efficient Mid-Power Led  
 Protection : IP20



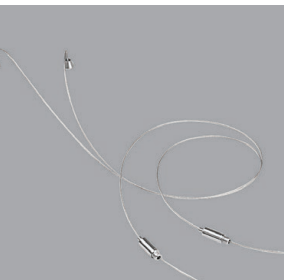
Code	Lenght (a)	System Power	System Light Flux	Color Temperature	Weight
DFR 60/C 100/36	1.000mm	36 W	3.000lm	3000K-4000K-5000K	3.000gr
DFR 60/C 150/54	1.500mm	54 W	4.458 lm	3000K-4000K-5000K	4.500gr
DFR 80/C 100/36	1.000mm	36 W	3.033 lm	3000K-4000K-5000K	3.400gr
DFR 80/C 150/54	1.500mm	54 W	4.550 lm	3000K-4000K-5000K	5.200gr
DFR BP 60 (Connection Apparatus)					
DFR BP 80 (Connection Apparatus)					
DFR AT (Pendant Apparatus)					

## DFR BP

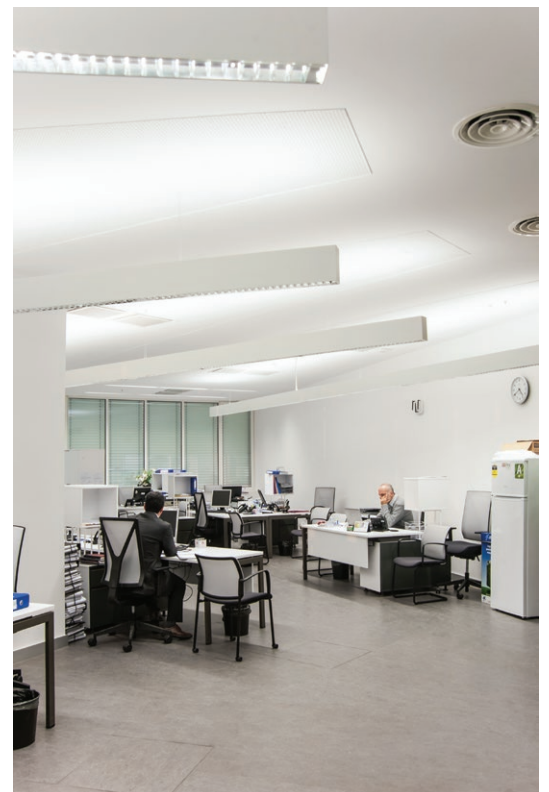


Connection apparatus for lineer applications.

## DFR AT



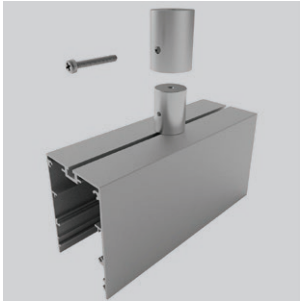
Bracket comprised of steel wire and chrome plated special wire holder.



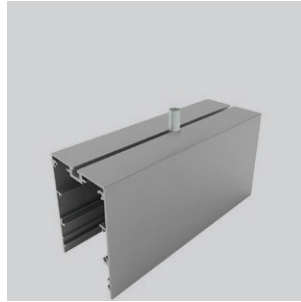
# KARIZMA

Connection apparatus for linear applications

Surface mounting parts



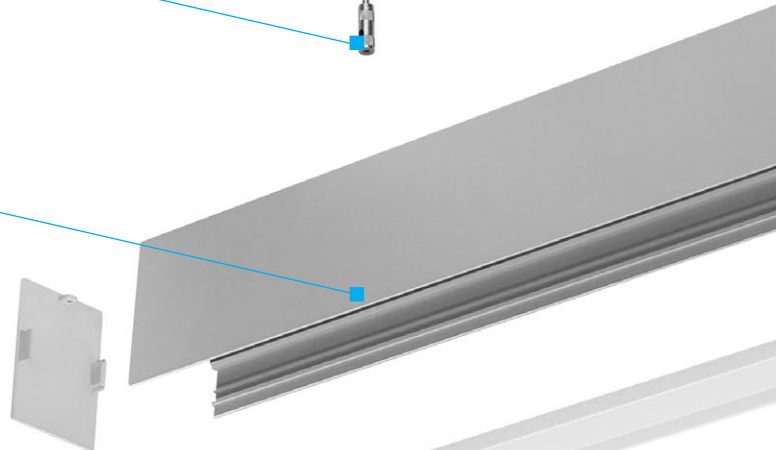
Pendant part  
(used with adjustable wire holder)



In order to mount the luminaire onto the ceiling for KARIZMA types, there is a special bracket mounted on the luminaire.



There are channel protrusions which can hold the plate on which PCB is mounted on the aluminum extrusion body and diffuser.



Luminaire Plate has been produced from DKP sheet metal.

In KARIZMA luminaires, 180lm/watt Midpower Leds are used by arraying them on Aluminum PCB. And also, these PCBs are connected with Berquist material on the plate in order for them to conduct the heat that they get from the leds.

There are 7 groups of LEDs on the PCB. Only one of these LEDs can be tripped depending on the safety kit when the power is cut off.

Light passing through prismatic structure spreads from double parabolic reflector to the surface to be lightened with extremely low glare values. (CAT1 - CAT2)

