

Canopus





Canopus

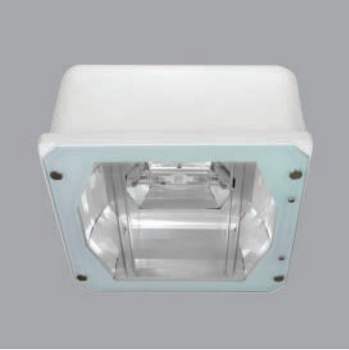
Fixtures

All petrol stations are going to be renewed with LITPA fixtures. You can use your free style more and more in your projects with Canopus model fixtures that has symmetrical - asymmetrical MIRO-HID aluminum reflectors and recessed/surface mounted types and the aluminum body combined with performance and design. With their reflector structures that has extremely high efficiency and eligibility to use with Metal Halide Lamps, Canopus fixtures offer a huge energy disposal in petrol station lighting applications.

CANOPY FIXTURES / CANOPUS (MAS)



MAS/S



Description

Body: High quality 2 mm thick aluminum, painted with min. 80 micron polyester powder paint. Frame is aluminum injection.
Symmetrical Reflector: 0.4 mm thick special purposed silver mirror aluminum.
Glass: 5 mm thick tempered with serigraphy.

Code	Lamp	Color
MAS 150/S	1x150W HQ-TS/HCI-TS	White
MAS 250/S	1x250W HCI-TM	White

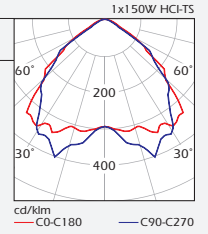
Box Dimensions

Inside box 1 PCS.
 MAS 150/S 360x360x255 mm
 MAS 250/S 360x360x255 mm

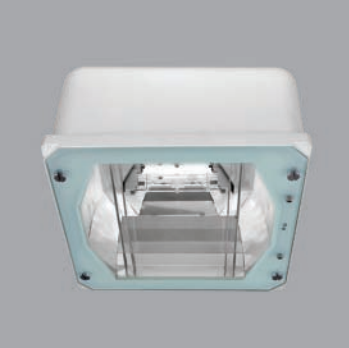
Weight

MAS 150/S 7.000 gr
 MAS 250/S 8.300 gr

Protection: IP65



MAS/AS



Description

Body: High quality 2 mm thick spinned aluminum, painted with min. 80 micron polyester powder paint. Frame is aluminum injection.
Asymmetrical Reflector: 0.4 mm thick special purposed silver mirror aluminum.
Glass: 5 mm thick tempered with serigraphy.

Code	Lamp	Color
MAS 150/AS	1x150W HQ-TS/HCI-TS	White
MAS 250/AS	1x250W HCI-TM	White

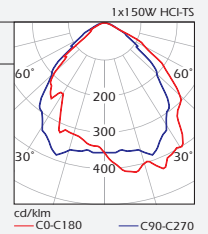
Box Dimensions

Inside box 1 PCS.
 MAS 150/AS 360x360x255 mm
 MAS 250/AS 360x360x255 mm

Weight

MAS 150/AS 7.000 gr
 MAS 250/AS 8.300 gr

Protection: IP65



Dimensions

