

FGS





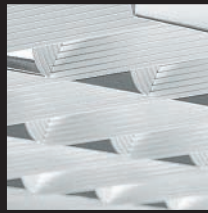
Double Parabolic Bright Louvre (DP1)

Produced out of 99.9 % pure bright aluminum as double parabolic.



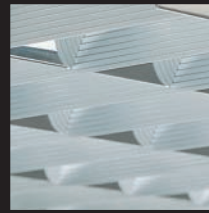
Double Parabolic Matt Louvre (DP 2)

Produced out of 99.9 % pure matt aluminum as double parabolic.



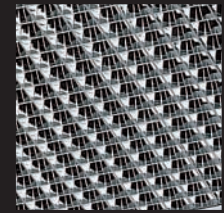
Single Parabolic Bright Aluminum Louvre (SP 1)

Produced out of 99.9 % pure bright aluminum.



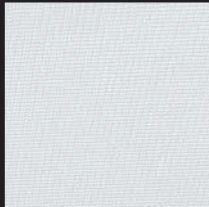
Single Parabolic Matt Aluminum Louvre (SP 2)

Produced out of 99.9 % pure matt aluminum.



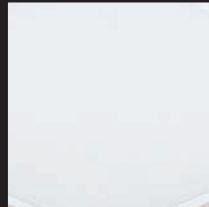
Mesh Louvre (AL)

Specially shaped metallic louvre.



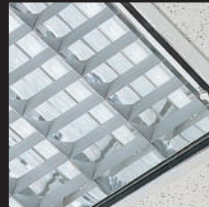
Prismatic Lens (P1)

2.5 mm thick prismatic acrylic diffuser.



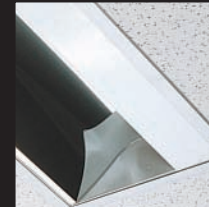
Opal Diffuser (OP)

2.8 mm thick opal acrylic diffuser.



Waterproof (WP)

99.9 % pure aluminium 4 mm thick tempered glass.



Asymmetrical Louvre (AS)

Manufactured as asymmetrically out of 99.9 % pure imported aluminium.

	4x18	1x36 2x36		
			1x18 2x18	
		3x36 4x36		

Modular & Clip-In

Ceiling Fixtures

FGS Series, produced for applications of suspended ceiling and that has an important role in construction technology, consist of products frequently used in general lighting thanks to their wide reflector type and size ranges and also their easy montage.

MODULAR and CLIP-IN TYPE CEILING FIXTURES/ FGS 300-002



FGS 300-002/DP1



Description

Body: Manufactured from 0.6 mm thick A1 quality DKP steel sheet and painted with min. 80 micron electrostatic powder paint.
Double Parabolic Bright Louvre (DP1): Manufactured of (99.9%) pure bright aluminum as double parabolic.

Code	Lamp	Color
Modular Ceiling		
FGS300/218/DP1	2x18W L	White
FGS300/236/DP1	2x36W L	White
FGS300/418/DP1	4x18W L	White
Clip-in Type		
FGS002/418/DP1	4x18W L	White

Box Dimensions

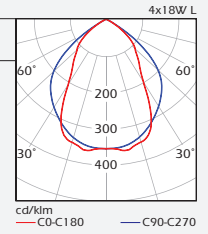
Inside box 1 PCS.	
FGS 300/218 DP1	315x 655x90 mm
FGS 300/236 DP1	315x1260x90 mm
FGS 300/418 DP1	670x 610x85 mm
FGS 002/418 DP1	670x 610x85 mm

Cut-out:	FGS 300/218/DP1	280x 580 mm
	FGS 300/236/DP1	280x1183 mm
	FGS 300/418/DP1	580x 580 mm
	FGS 002/418/DP1	Clip-in Type

Weight

FGS 300/218 DP1	2.950 gr
FGS 300/236 DP1	5.500 gr
FGS 300/418 DP1	5.000 gr
FGS 002/418 DP1	5.150 gr

Protection: IP20



FGS 300-002/DP2



Description

Body: Manufactured from 0.6 mm thick A1 quality DKP steel sheet and painted with min. 80 micron electrostatic powder paint.
Double Parabolic Matt Louvre (DP2): Manufactured of (99.9%) pure matt aluminum as double parabolic.

Code	Lamp	Color
Modular Ceiling		
FGS300/218/DP2	2x18W L	White
FGS300/236/DP2	2x36W L	White
FGS300/418/DP2	2x18W L	White
Clip-in Type		
FGS002/418/DP2	4x18W L	White

Box Dimensions

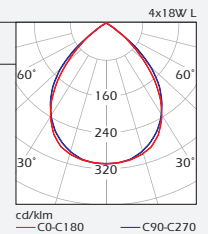
Inside box 1 PCS.	
FGS 300/218 DP2	315x 655x90 mm
FGS 300/236 DP2	315x1260x90 mm
FGS 300/418 DP2	670x 610x85 mm
FGS 002/418 DP2	670x 610x85 mm

Cut-out:	FGS 300/218/DP2	280x 580 mm
	FGS 300/236/DP2	280x1183 mm
	FGS 300/418/DP2	580x 580 mm
	FGS 002/418/DP2	Clip-in Type

Weight

FGS 300/218 DP2	2.950 gr
FGS 300/236 DP2	5.500 gr
FGS 300/418 DP2	5.000 gr
FGS 002/418 DP2	5.150 gr

Protection: IP20



FGS 300-002/SP1



Description

Body: Manufactured from 0.6 mm thick A1 quality DKP steel sheet and painted with min. 80 micron electrostatic powder paint.
Single Parabolic Bright Aluminum Louvre (SP1): Manufactured from 0.4 mm thick (99.9%) pure bright aluminum

Code	Lamp	Color
FGS300/218/SP1	2x18W L	White
FGS300/236/SP1	2x36W L	White
FGS300/418/SP1	4x18W L	White
Clip-in Type		
FGS002/418/SP1	4x18W L	White

Box Dimensions

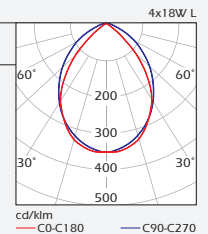
Inside box 1 PCS.	
FGS 300/218 SP1	315x 655x90 mm
FGS 300/236 SP1	315x1260x90 mm
FGS 300/418 SP1	670x 610x85 mm
FGS 002/418 SP1	670x 610x85 mm

Cut-out:	FGS 300/218/SP1	280x 580 mm
	FGS 300/236/SP1	280x1183 mm
	FGS 300/418/SP1	580x 580 mm
	FGS 002/418/SP1	Clip-in Type

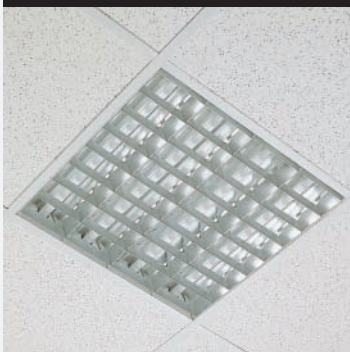
Weight

FGS 300/218 SP1	3.050 gr
FGS 300/236 SP1	5.500 gr
FGS 300/418 SP1	5.000 gr
FGS 002/418 SP1	5.150 gr

Protection: IP20



FGS 300-002/SP2



Description

Body: Manufactured from 0.6 mm thick A1 quality DKP steel sheet and painted with min. 80 micron electrostatic powder paint.
Single Parabolic Matt Aluminum Louvre (SP2): Manufactured of (99.9%) pure matt aluminum

Code	Lamp	Color
FGS300/218/SP2	2x18W L	White
FGS300/236/SP2	2x36W L	White
FGS300/418/SP2	4x18W L	White
Clip-in Type		
FGS002/418/SP2	4x18W L	White

Box Dimensions

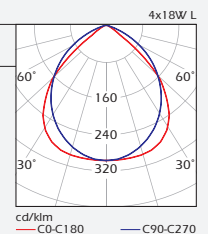
Inside box 1 PCS.	
FGS 300/218 SP2	315x 655x90 mm
FGS 300/236 SP2	315x1260x90 mm
FGS 300/418 SP2	670x 610x85 mm
FGS 002/418 SP2	670x 610x85 mm

Cut-out:	FGS 300/218/SP2	280x 580 mm
	FGS 300/236/SP2	280x1183 mm
	FGS 300/418/SP2	580x 580 mm
	FGS 002/418/SP2	Clip-in Type

Weight

FGS 300/218 SP2	3.050 gr
FGS 300/236 SP2	5.500 gr
FGS 300/418 SP2	5.000 gr
FGS 002/418 SP2	5.150 gr

Protection: IP20



MODULAR and CLIP-IN TYPE CEILING FIXTURES/ FGS 300-002



FGS 300-002/P1

Description

Body: Manufactured from 0.6 mm thick Al quality DKP steel sheet and painted with min. 80 micron electrostatic powder paint.
Prismatic Lens (P1): 2.5 mm thick acrylic diffuser.

Code	Lamp	Color
Modular Ceiling		
FGS300/218/P1	2x18W L	White
FGS300/236/P1	2x36W L	White
FGS300/418/P1	4x18W L	White
Clip-in Type		
FGS002/418/P1	4x18W L	White

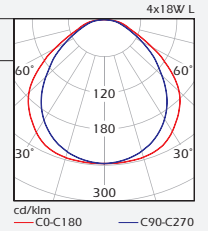
Box Dimensions
 Inside box 1 PCS.
 FGS 300/218 P1 315x 655x90 mm
 FGS 300/236 P1 315x1260x90 mm
 FGS 300/418 P1 670x 610x85 mm
 FGS 002/418 P1 670x 610x85 mm

Cut-out: FGS 300/218/P1 280x 580 mm
 FGS 300/236/P1 280x1183 mm
 FGS 300/418/P1 580x 580 mm
 FGS 002/418/P1 Clip-in Type

Weight

FGS 300/218 P1 3.700 gr
 FGS 300/236 P1 6.100 gr
 FGS 300/418 P1 5.100 gr
 FGS 002/418 P1 5.250 gr

Protection: IP20
IP43 **Optional**



FGS 300-002/OP

Description

Body: Manufactured from 0.6 mm thick Al quality DKP steel sheet and painted with min. 80 micron electrostatic powder paint.
Opal Diffuser (OP): 2.8 mm thick acrylic diffuser.

Code	Lamp	Color
Modular Ceiling		
FGS300/218/OP	2x18W L	White
FGS300/236/OP	2x36W L	White
FGS300/418/OP	4x18W L	White
Clip-in Type		
FGS002/418/OP	4x18W L	White

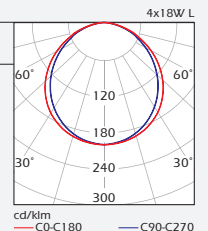
Box Dimensions
 Inside box 1 PCS.
 FGS 300/218 OP 315x 655x90 mm
 FGS 300/236 OP 315x1260x90 mm
 FGS 300/418 OP 670x 610x85 mm
 FGS 002/418 OP 670x 610x85 mm

Cut-out: FGS 300/218/OP 280x 580 mm
 FGS 300/236/OP 280x1183 mm
 FGS 300/418/OP 580x 580 mm
 FGS 002/418/OP Clip-in Type

Weight

FGS 300/218 OP 4.100 gr
 FGS 300/236 OP 6.500 gr
 FGS 300/418 OP 5.500 gr
 FGS 002/418 OP 5.650 gr

Protection: IP20
IP43 **Optional**



FGS 300-002/AL

Description

Body: Manufactured from 0.6 mm thick Al quality DKP steel sheet and painted with min. 80 micron electrostatic powder paint.
Mesh Louvre: Specially shaped metallic louvre.

Code	Lamp	Color
Modular Ceiling		
FGS300/218/AL	2x18W L	White
FGS300/236/AL	2x36W L	White
FGS300/418/AL	4x18W L	White
Clip-in Type		
FGS002/418/AL	4x18W L	White

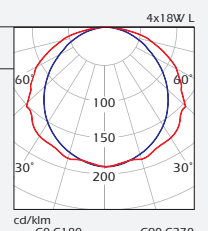
Box Dimensions
 Inside box 1 PCS.
 FGS 300/218 AL 315x 655x90 mm
 FGS 300/236 AL 315x1260x90 mm
 FGS 300/418 AL 670x 610x85 mm
 FGS 002/418 AL 670x 610x85 mm

Cut-out: FGS 300/218/AL 280x 580 mm
 FGS 300/236/AL 280x1183 mm
 FGS 300/418/AL 580x 580 mm
 FGS 002/418/AL Clip-in Type

Weight

FGS 300/218 AL 4.100 gr
 FGS 300/236 AL 6.500 gr
 FGS 300/418 AL 5.500 gr
 FGS 002/418 AL 5.650 gr

Protection: IP20



FGS 300-002/AS

Description

Body: Manufactured from 0.6 mm thick Al quality DKP steel sheet and painted with min. 80 micron electrostatic powder paint.
Asymmetrical Louvre (AS): Manufactured as asymmetrically out of (99.9%) pure bright aluminum.

Code	Lamp	Color
Modular Ceiling		
FGS300/118/AS	1x18W L	White
FGS300/136/AS	1x36W L	White

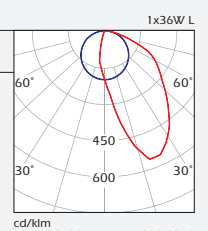
Box Dimensions
 Inside box 1 PCS.
 FGS 300/118 AS 315x 655x110 mm
 FGS 300/136 AS 315x1260x110 mm

Cut-out: FGS 300/118/AS 280x 580 mm
 FGS 300/136/AS 280x1183 mm
 FGS 002/418/AS Clip-in Type

Weight

FGS 300/118 AS 3.100 gr
 FGS 300/136 AS 5.300 gr

Protection: IP20



MODULAR and CLIP-IN TYPE CEILING FIXTURES/ FGS 300-002



FGS 300-002/WP



Description

Body: Manufactured from 0.6 mm thick Al quality DKP steel sheet and painted with min. 80 micron electrostatic powder paint.
Reflector: 0.4 mm thick aluminum
Glass: 4 mm thick tempered glass.

Code

Lamp

Color

Modular Ceiling

FGS300/118/WP 1x18W L
 FGS300/136/WP 1x36W L
 FGS300/218/WP 2x18W L
 FGS300/236/WP 2x36W L
 FGS300/418/WP 4x18W L
 FGS300/436/WP 4x36W L

Clip-in Type

FGS002/418/WP 4x18W L

Box Dimensions

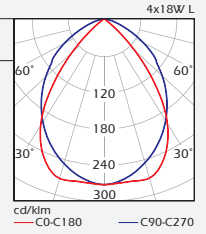
Inside box 1 PCS.
 FGS 300/118 WP 315x 660x145 mm
 FGS 300/136 WP 315x1260x145 mm
 FGS 300/218 WP 315x 660x145 mm
 FGS 300/236 WP 315x1260x145 mm
 FGS 300/418 WP 635x 660x145 mm
 FGS 300/436 WP 635x1260x145 mm
 FGS 002/418 WP 670x 610x 85 mm

White
 White
 White
 White
 White
 White

White

Weight

FGS 300/118 WP 5.150 gr
 FGS 300/136 WP 10.300 gr
 FGS 300/218 WP 5.400 gr
 FGS 300/236 WP 10.800 gr
 FGS 300/418 WP 10.550 gr
 FGS 300/436 WP 21.100 gr
 FGS 002/418 WP 10.700 gr

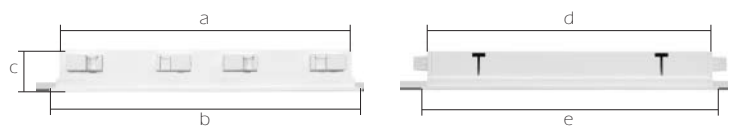


Cut-out:

FGS 300/118/WP 280x 580 mm
 FGS 300/136/WP 280x1183 mm
 FGS 300/218/WP 280x 580 mm
 FGS 300/236/WP 280x1183 mm
 FGS 300/418/WP 580x 580 mm
 FGS 300/436/WP 580x1183 mm
 FGS 002/418/WP Clip-in Type

Protection: IP65

Dimensions (FGS 300-002/DP1-DP2-SP1-SP2-P1-OP-AL-AS-WP)



Modular Ceiling	a	b	c	d	e
FGS 300/218	260mm	295mm	80mm	577mm	595mm
FGS 300/236	260mm	295mm	80mm	1177mm	1195mm
FGS 300/418	560mm	595mm	80mm	577mm	595mm
Clip-in Type	a	b	c	d	e
FGS 002/418	560mm	599mm	80mm	577mm	599mm